



Morecambe Offshore Windfarm: Generation Assets Environmental Statement

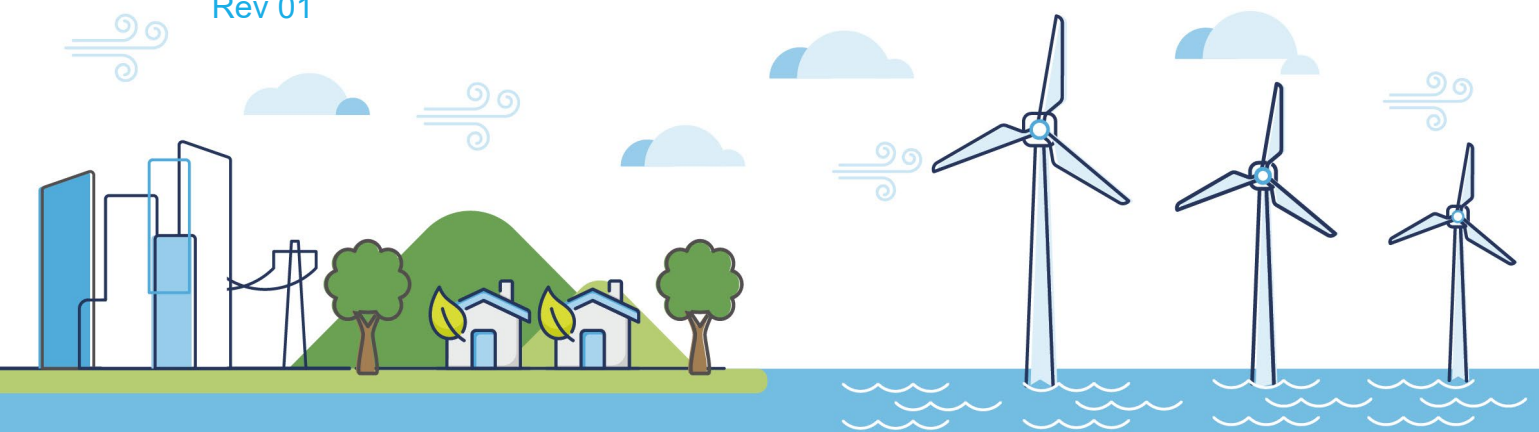
Volume 5

Chapter 18 SLVIA Figures (Part 19 of 34)

PINS Document Reference: 5.3.18.19

APFP Regulation: 5(2)(a)

Rev 01



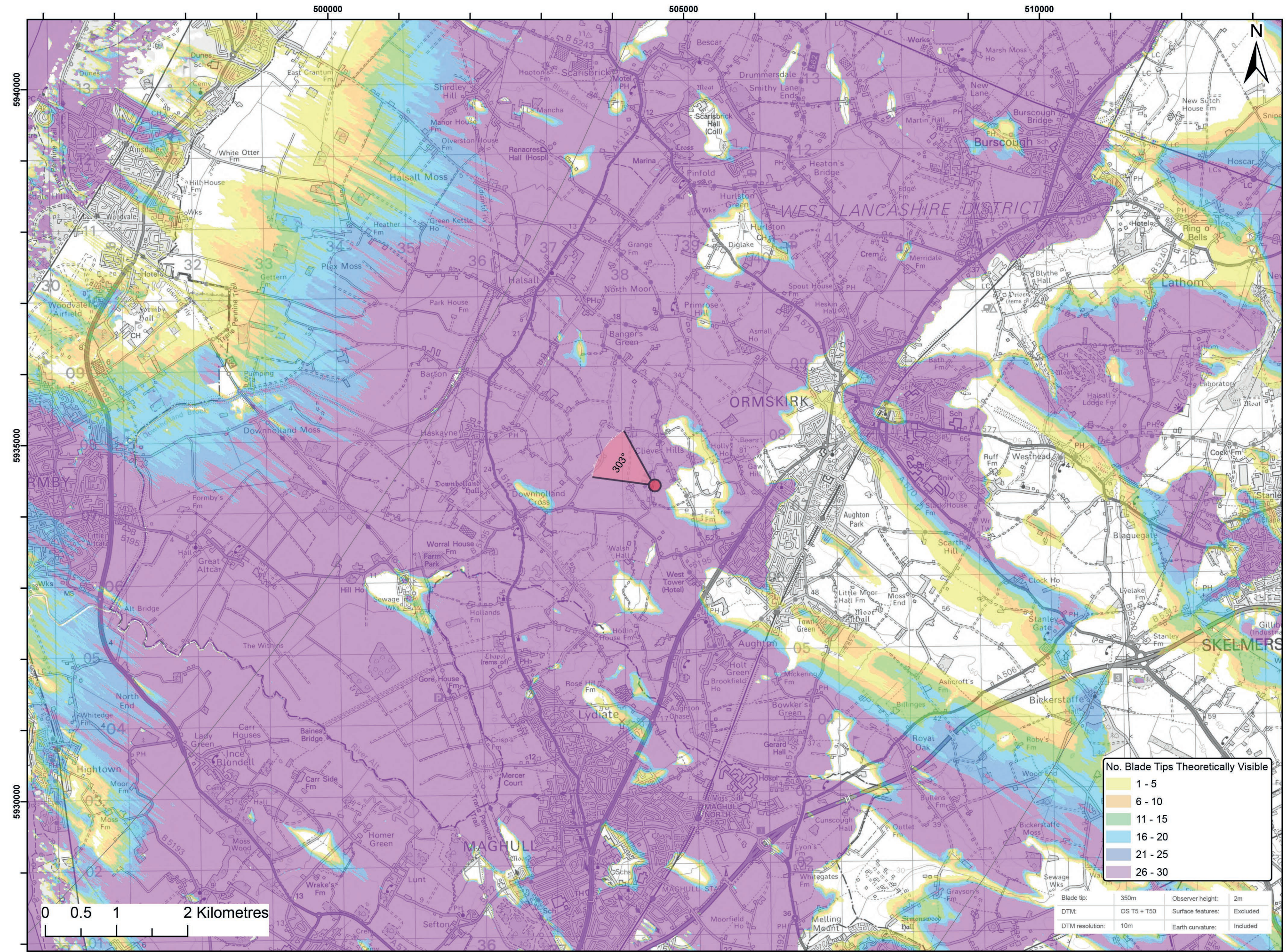
Document History

| | | | |
|------------------------|-----------------------------|-----------------|----------|
| Doc No | MOR001-FLO-CON-ENV-FIG-1180 | Rev | 01 |
| Alt Doc No | PC1165-RHD-ES-XX-DG-Z-0018 | | |
| Document Status | Approved for Use | Doc Date | May 2024 |
| PINS Doc Ref | 5.3.18.19 | APFP Ref | 5(2)(a) |

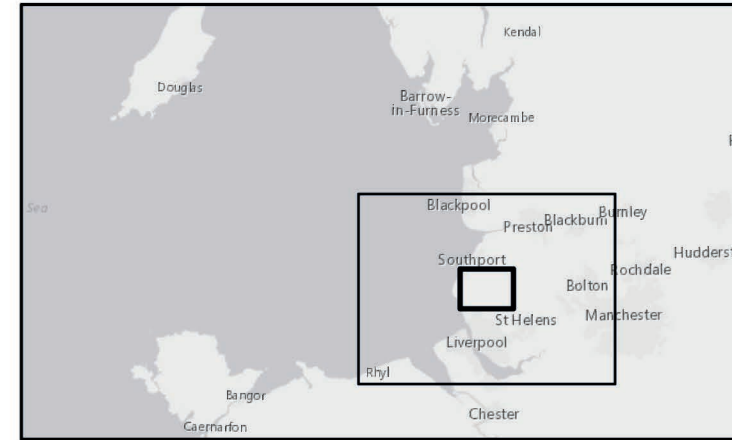
| Rev | Date | Doc Status | Originator | Reviewer | Approver | Modifications |
|------------|-------------|-------------------|--------------------|---------------------------------|---------------------------------|----------------------|
| 01 | May 2024 | Approved for Use | Royal HaskoningDHV | Morecambe Offshore Windfarm Ltd | Morecambe Offshore Windfarm Ltd | n/a |



Viewpoint Location Plan Baseline Panorama (90 Degree View)
Scale: 1:200,000



Viewpoint Location Plan (53.5 Degree View)
Scale: 1:50,000



- Legend:
- Morecambe Offshore Wind Farm - Assumed WTG locations (30 x BT 310m(HAT))
 - ▲ 90 Degree Field of View
 - ▼ 53.5 Degree Field of View
 - 10km Radii
 - ▭ 60km Study Area
 - ▭ Morecambe Offshore Windfarm Site
- Cumulative Wind Farms Status
- Operational
 - Under Construction
 - Consented
 - Application
 - Scoping
 - Pre-Application

© Crown copyright and database rights (2023) Ordnance Survey 0100031673.

Report:
Morecambe Offshore Windfarm: Generation Assets
Environmental Statement

Title:
Viewpoint 13:
Clieves Hill

Figure: 18.36a | Drawing No: 211609

| Revision: | Date: | Drawn: | Checked: | Size: | Scale: |
|-----------|------------|--------|----------|-------|----------|
| P02 | 25/09/2023 | RA | SM | A3 | 1:50,000 |

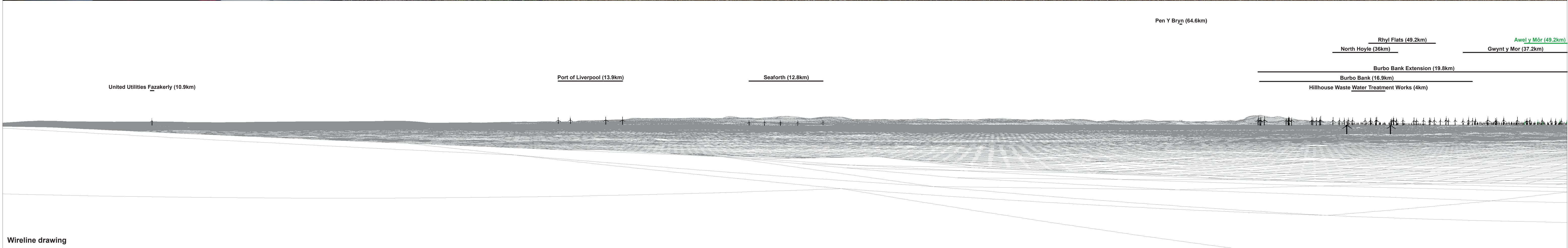
Co-ordinate system: WGS 1984 UTM Zone 30N





Baseline photograph

This image provides landscape and visual context only



Wireline drawing

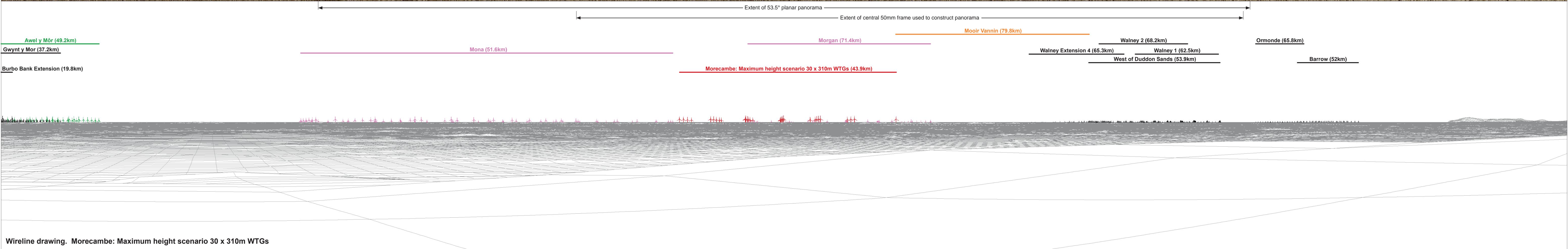
Figure: 18:36b
Viewpoint 13: Clieves Hill

| | | | | | |
|--------------------|-------------------|---------------------------|------------------------------|----------------|----------------------|
| OS reference: | 338451 E 407315 N | Horizontal field of view: | 90° (cylindrical projection) | Camera: | Canon EOS 5D Mark II |
| Eye level: | 58.16 m AOD | Principal distance: | 522 mm | Lens: | EF50mm f/1.4 USM |
| Direction of view: | 213° | | | Camera height: | 1.5 m AGL |
| Nearest turbine: | 43.944 km | | | Date and time: | 08/08/2022, 13:15 |



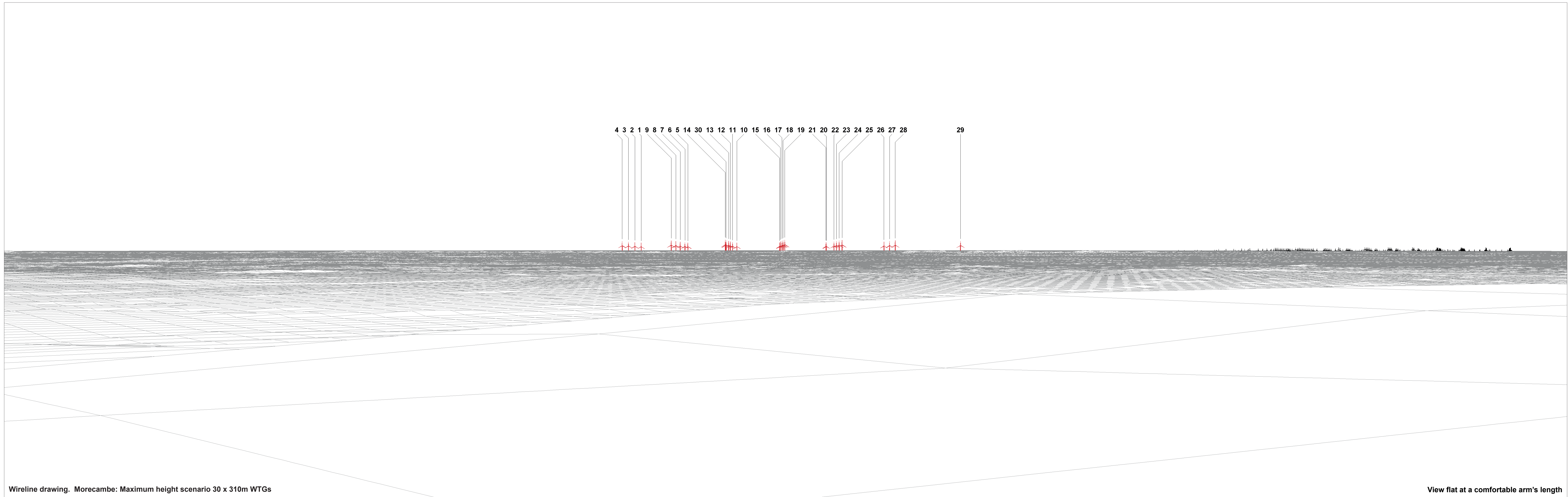
Baseline photograph

This image provides landscape and visual context only



| | | | | | |
|--------------------|-------------------|---------------------------|------------------------------|----------------|----------------------|
| OS reference: | 338451 E 407315 N | Horizontal field of view: | 90° (cylindrical projection) | Camera: | Canon EOS 5D Mark II |
| Eye level: | 58.16 m AOD | Principal distance: | 522 mm | Lens: | EF50mm f/1.4 USM |
| Direction of view: | 303° | | | Camera height: | 1.5 m AGL |
| Nearest turbine: | 43.944 km | | | Date and time: | 08/08/2022, 13:15 |

Figure: 18:36c
Viewpoint 13: Clieves Hill



Wireline drawing. Morecambe: Maximum height scenario 30 x 310m WTGs

View flat at a comfortable arm's length

| | | | | | |
|---------------------------|-------------------|------------------------------------|---------------------------|-----------------------|----------------------|
| OS reference: | 338451 E 407315 N | Horizontal field of view: | 53.5° (planar projection) | Camera: | Canon EOS 5D Mark II |
| Eye level: | 58.16 m AOD | Principal distance: | 812.5 mm | Lens: | EF50mm f/1.4 USM |
| Direction of view: | 303° | Paper size: | 841 x 297 mm (half A1) | Camera height: | 1.5 m AGL |
| Nearest turbine: | 43.944 km | Correct printed image size: | 820 x 260 mm | Date and time: | 08/08/2022, 13:15 |

Figure: 18:36d
Viewpoint 13: Clieves Hill



Baseline Photograph (offshore operational turbines have been rendered in this view)

View flat at a comfortable arm's length

| | | | | | |
|---------------------------|-------------------|------------------------------------|---------------------------|-----------------------|----------------------|
| OS reference: | 338451 E 407315 N | Horizontal field of view: | 53.5° (planar projection) | Camera: | Canon EOS 5D Mark II |
| Eye level: | 58.16 m AOD | Principal distance: | 812.5 mm | Lens: | EF50mm f/1.4 USM |
| Direction of view: | 303° | Paper size: | 841 x 297 mm (half A1) | Camera height: | 1.5 m AGL |
| Nearest turbine: | 43.944 km | Correct printed image size: | 820 x 260 mm | Date and time: | 08/08/2022, 13:15 |

Figure: 18:36e
Viewpoint 13: Clieves Hill



Photomontage

View flat at a comfortable arm's length

| | | | |
|--|--|---|--|
| OS reference: 338451 E 407315 N | Horizontal field of view: 53.5° (planar projection) | Camera: Canon EOS 5D Mark II | |
| Eye level: 58.16 m AOD | Principal distance: 812.5 mm | Lens: EF50mm f/1.4 USM | |
| Direction of view: 303° | Paper size: 841 x 297 mm (half A1) | Camera height: 1.5 m AGL | |
| Nearest turbine: 43.944 km | Correct printed image size: 820 x 260 mm | Date and time: 08/08/2022, 13:15 | Figure: 18:36f Viewpoint 13: Clieves Hill |